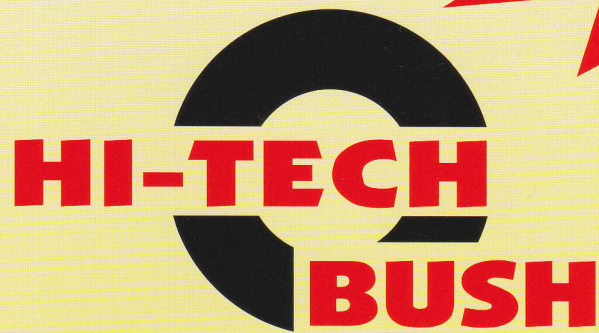


**6 MONTHS**

**Warranty On  
HI-TECH BUSH  
Life Span**

\*\* Terms & Conditions Apply



**THE SIGN OF QUALITY**

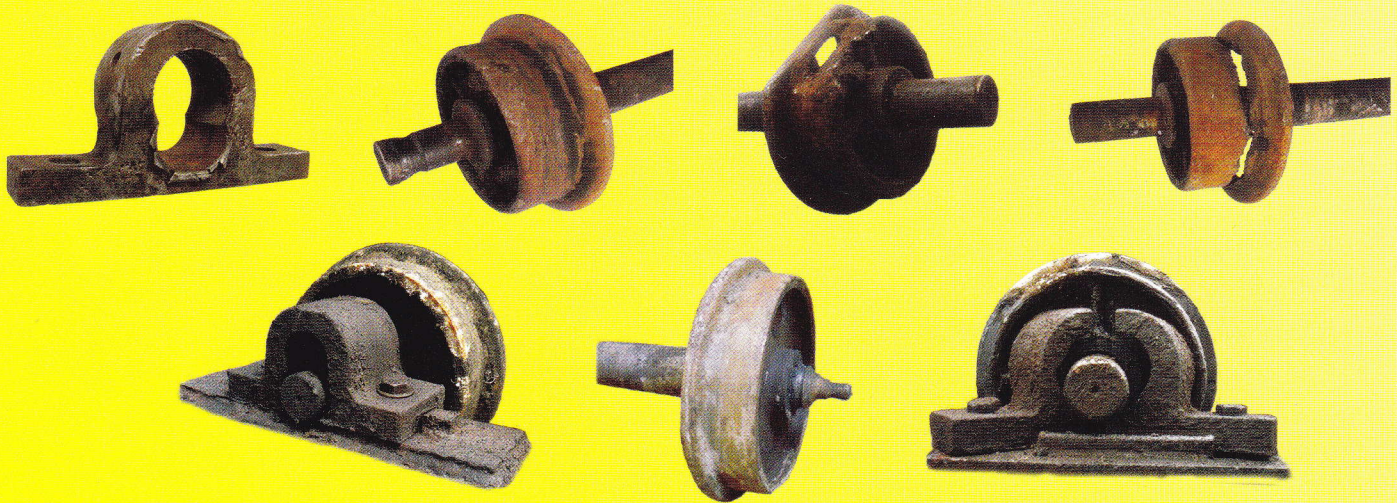
# HI-TECH BUSH





# PROBLEMS ENCOUNTER

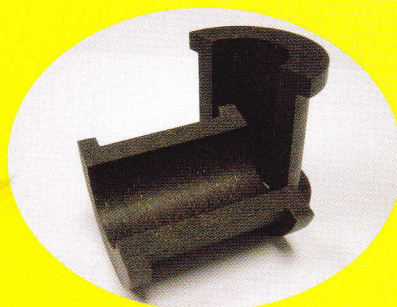
---



# SOLUTION : HI-TECH BUSH

---

**HI - TECH BUSH** is specially formulated with Japanese Technology and knowhow. It is made of a combination of 3 fibres (Composite Fibres), which contribute to the Strength, Wear Resistance & Impact Cushion. High Quality grease ingredient is embedded to make our **HI - TECH BUSH** self lubricant. Its excellent wear resistance, stability and durability in water, steam and oily environment has made **HI - TECH BUSH** a very good material for application in various industries.



# FEATURES

---

- Good Heat Resistance
- Good Wear Resistance
- Good Chemical Resistance
- Shock Load Absorption
- No Damage to Mating Part

- Cost Effective
- Self Lubricating
- Theft Resistance
- Weight Reduction
- Tolerant Of Misalignment

Warranty Period Given On HI-TECH BUSH Life Span





# PHYSICAL AND MECHANICAL PROPERTIES

Property	Units	Results	Test Method / Standard
Maximum Compressive Load	kgf	> 9,500 *	Pressing by Shaft 45mm Dia x 100mm L
Compressive Modulus	kgf / cm <sup>2</sup>	35,800	ISO 604
Ultimate Tensile Strength	kgf / cm <sup>2</sup>	360	ISO 527-4
Tensile Modulus	kgf / cm <sup>2</sup>	105,300	ISO 527-4
Interlaminar Shear Strength	kgf / cm <sup>2</sup>	97.4	ASTM D 2344
Abrasion Resistance Weight Loss	mg	470	ASTM D 4060
Flexural Modulus	kgf / cm <sup>2</sup>	82,200	ISO 178
Izod Impact Strength (Notched)	KJ / m <sup>2</sup>	8	ASTM D 256
Rockwell Hardness	M Scale	100	ISO 2039-2
Coefficient of Linear Thermal Expansion	x 10 <sup>-5</sup> / °C	1.8	ASTM D 696
Max Working Temperature	°C	180	ASTM D 696

Note:-

\* The maximum load cell available is 10,000 kgf

**HI - TECH BUSH** is complied with the requirements of Malaysian Food Act 1983 (Act 281) and Regulation Thirteenth Schedule (Regulation 28) all amendment up to 20th February 2008.

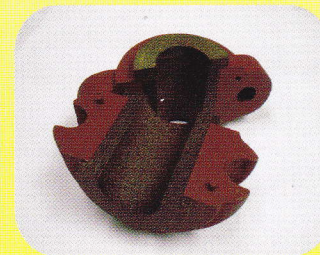
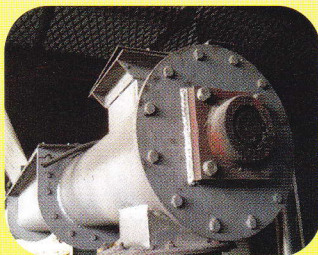
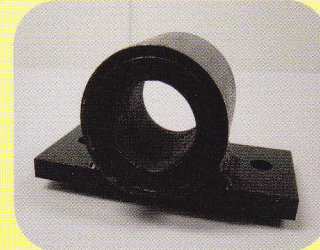
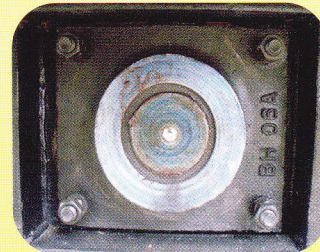
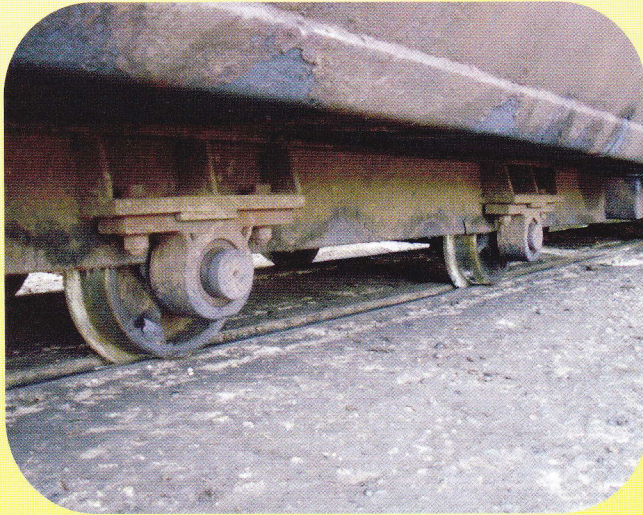
**Warranty Period Given On HI-TECH BUSH Life Span**





# TYPICAL APPLICATIONS

- Bogie Wheel Axial Block
- Hanger Bearing for CBC, Fruit, Fiber, Nut, Kernal & Shell Conveyor
- Square Front Block
- Digester Bottom Guidance Bush
- Aerator Guidance Bush
- Screw Press Lengthening Shaft Bush



## STANDARD SIZE AVAILABLE

Tube:			Rod:		
Min	I/D	35mm	Min	I/D	SOLID
Max	O/D	160mm	Max	O/D	90mm
Max	Length	250mm	Max	Length	250mm

Custom made and non-standard sizes can also be supplied

### LOCAL DISTRIBUTOR :-

#### PT. VICTORINDO KENCANA TEKNIK

Jl. Pulau Bunaken A3 - KIM 3, Medan 20242  
 North Sumatra - Indonesia  
 Tel: +62 61 8880 9911 (Hunting)  
 Fax: +62 61 8880 9996  
 HP: 0812 604 3887 / 0853 6161 7887  
 Email: sales.vkt@victorindogroup.com

### SOLE DISTRIBUTOR OF HI-TECH BUSH :-

#### CL ADVANCE ENGINEERING SDN. BHD.

No: 6, Jalan Sungai Rasah 27A, Sungai Rasah Light Ind.  
 Area, 41300 Klang, Selangor Darul Ehsan, Malaysia  
 Tel: +603 3344 2828 , +603 3344 4828, +603 3344 4818  
 Fax: +603 3342 4799 Email: clsb2828@gmail.com  
 H/P: +6012 277 1688, +6012 393 1728, +6012 234 3081  
 Website: www.hitechbush.com.my